

CERTIFICATE OF LOCATION OF GOVERNMENT CORNER

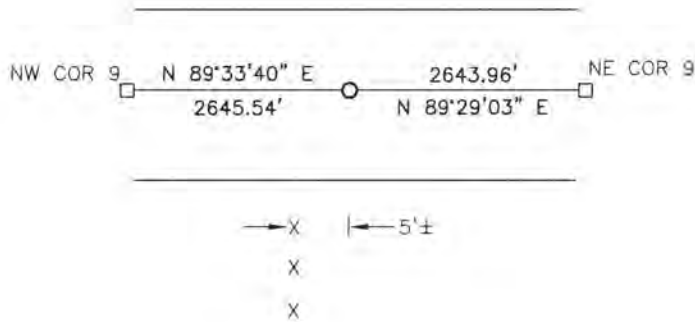
NORTH QUARTER Corner of Section 9, Township 106, Range 40, 5TH P.M.

STATE OF MINNESOTA, County of MURRAY

At the corner location shown on the sketch:

- On _____ found a _____
- left monument as found, lowered monument, removed monument (explain)
- On 4/3/15 placed a survey spike with seal #43844

SKETCH OF REFERENCE TIES



Minnesota State Plane Coordinate
System Murray County Datum
NAD83 (1996)

NO TIES

N: 158168.320
E: 529917.255

Statement of evidence relative to this corner location is on back of page.

I hereby certify that this document and the data contained herein was prepared by me or under my direct supervision.

[Signature] 3/2/16
SIGNATURE DATE

Registration No. 43844

- Land Surveyor, Professional Engineer
- County Surveyor, County Engineer

OFFICE OF THE COUNTY RECORDER

County of MURRAY

I hereby certify that this document was filed in the Co. Recorders office at 11:00 A.M on the 18TH day of OCTOBER A.D. 20 16

County Recorder Evelyn C. Larson

By _____, Deputy

DOCUMENT NO. _____

Statement of Evidence

In, 1861, D.W. Wellman and S.S. Smoot did the original subdivision of the township.

On April 19, 1969, Murray County Highway Department found a field stone at the corner. They set a concrete monument and a steel pin at the corner.

On April 3, 2015, Bueltel-Moseng Land Surveying set a survey spike with seal #43844 by using county highway stationing from old plans. The corner is 5'± east of fence to the south.